

## Commitment to Excellence

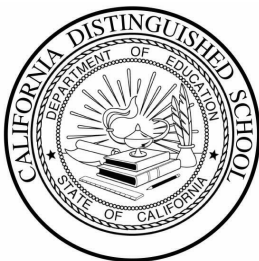
- Analy is the school of choice for hundreds of students from communities across Sonoma County!
- Safe & Supportive Learning Environment
- Highest Average Test Score in Chemistry & Physics in Sonoma County (STAR 2008)
- 75% of AP exams taken had a score of 3 or better (313 exams taken in 2008)
- California Distinguished School
- 2008 Annual Performance Index (API) score of 801 and met all AYP targets
- API Statewide Rank 9 out of 10
- 2008 Honor Roll School selection by California Business for Education Excellence and Just for Kids—California
- Award Winning Programs: Speech and Debate, Band, Math League, Theater, ROP Video, and Agriculture
- First Place Finish - California State Speech Championship 2008
- WASC Six Year Accreditation with a Three Year Review
- Variety of Honors & Advanced Placement Courses
- Academic & College Counseling
- Personal Counseling and Outreach Therapist
- Student Support Program—First Step Award
- Active Career Center with Career, College, & Scholarship Information
- Safe School Ambassador Program
- Peer Mediation Program
- Tutorial Program
- Average class size in core areas: 28

## Opportunities for Student Involvement:

Interact Club	Operation 141	Forensics Team
Christ Club	Garden Club	Speech & Debate Team
Athletics Club	Anime Club	Road Bike Club
Magic Club	Math Club	GSA Club
Eco-Club	Ping-Pong Club	Drama Club
French Club	Harry Potter Club	Band Club
Art Club	Dance Club	Film Club
Adopted Club	Adventure Club	Motorsports Club
Drum Circle	M.E.Ch.A. Club	Connect & Reach Club
Cheerleading	Newspaper	Peer Mediation
CSF	FFA	Student Senate
SSA	FCA	Yearbook

## Opportunities for Parental Involvement:

- Analy Booster Club
- Analy Education Foundation
- Analy Band Wagon
- Analy Volunteers
- Analy ELAC
- Analy Site Council
- Analy Garden Project



ANALY HIGH SCHOOL  
6950 Analy Avenue  
Sebastopol, CA 95472  
Phone: 707.824.2300  
Fax: 707.827.7938  
[www.analyhighschool.org](http://www.analyhighschool.org)

# Analy High School

*“One Hundred Years of  
Academic Excellence”*



*Established 1908*

### MISSION STATEMENT

*The mission of Analy High School  
is to promote academic and  
personal success, responsible  
citizenship and life-long learning,  
in a cooperative environment.*

## About our school and community:

Analy High School sits on the beautiful Laguna de Santa Rosa midway between the busy 101 and the wild woods and beaches of the Sonoma Coast. Analy is



Mascot: Tigers  
Colors: Royal Blue & White

conveniently located just off the small busy highway that cuts through the town of Sebastopol, a city of

8,000 people surrounded by small farms, open space and dairy lands. This town's rural tradition is giving way to a more professional population. The community is affluent and well-educated, with over 70% of Analy parents having a college degree and 21% report having a master's degree. Many Analy graduates stay in the community as business people who in turn contribute to the school. Analy is well supported by the parents, businesses, and community. Our students performance on the SAT, ACT, AP, and STAR tests is at the top of all Sonoma County high schools. Analy is a hundred year old school, with a great tradition of academic excellence. Our school is the geographic and symbolic heart and soul of Sebastopol.

### Academics:

Analy High School provides rich and challenging academic offerings. Students are able to prepare themselves for continued study at post-secondary schools or for the world of work. Some of the courses offered at Analy High School are:

**Honors & Advanced Placement:** English , Sci-



Analy Band performing at Disneyland

ence, Math, Social Science, Fine Arts, & Modern Language.

**Fine Arts:** Art, Graphic Art, Photo, Choir, Band, Theater Arts, Orchestra, Jazz Ensemble, Ceramics.

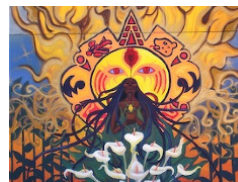
**Practical Arts / Applied Academics & Technology:**

Agricultural Science, Foods, Clothing, Technology, CADD, Wood, Auto, Video Communications & Public Safety.

**Other Offerings:** Modern Language (Spanish & French), Integrated Physical Science, Physical Education, Social Science Survey, Special Education and Leadership.

### Activities:

Analy High School offers a wide variety of clubs



Mural project 2008

and activities that provide all students an opportunity to get involved in school life outside of the classroom. A large percentage of AHS students

participate in one or more of the activities available. Our Student Leadership takes an active role in planning school rallies, assemblies, dances, spirit days, and many other activities that

enable students a rich and diverse high school experience that they will cherish throughout their life.

### Athletics:

Analy High School Tigers are a member of the Sonoma County Athletic League. Our Athletic Department consists of 41 teams in 12 different sports. It is committed to providing a superior athletic program to enhance the development of positive student habits and attitudes. Life long lessons in



Competitive athletics with rich history of champions

sportsmanship, teamwork, camaraderie, adversity, competition, and

how to win and lose gracefully are

integral parts of the program. By team membership, athletic participation plays an important role in helping each student improve one's self-concept, develop leadership skills, and learn about character development through sport. Analy teams often receive North Coast Section Academic Team awards for their outstanding performance in the classroom and on the field. The athletic program supports the mission of Analy High School and the WSCUHS District.

---

To arrange for a school visit or to have your student shadow for a day, please call 707.824.2319.